

SEARCH ENGINE Resource Pack

Robert Stephenson

These resources are currently available through Search Engine. Our list of resources is growing, please fill in a comment form with comments or recommendations.

*(Reference number for items in **bold**)*

Bibliography

- Addyman, John. Robert Stephenson : railway engineer. North Eastern Railway Association, 2005. Shelfmark: **E1/292**
- Bailey, Michael R. The engineering and history of Rocket : a survey report. York : National Railway Museum, 2001. Shelfmark: **E8A/49/2**
- Bailey, Michael R. The Stephenson's Rocket : a history of a pioneering locomotive. York : National Railway Museum, 2002. Shelfmark: **E8A/50**
- Haworth, Victoria. Robert Stephenson : engineer & scientist : the making of a prodigy, 1803 – 1859. Newcastle upon Tyne : Rocket Press, c2004. Shelfmark: **E1/290**
- McGowan, Christopher. The Rainhill trials : the greatest contest of industrial Britain and the birth of commercial rail. London : Little, Brown, 2004. Shelfmark: **B1/80**

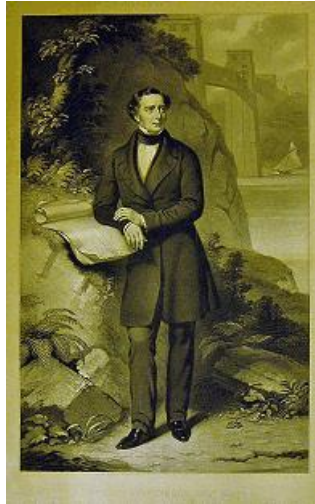
More titles and information available on our library catalogue:
www.railwaymuseum.org.uk/librarycatalogue

Art Work

Engraving. 'Portrait of Robert Stephenson'. Painted by John Lucas. Engraved by Samuel Bellin. Published by Henry Graves & Company, Printsellers in Ordinary to Her Majesty & HRH Prince Albert, 6 Pall Mall, London. 21 February 1853.

1975-8623

NRM; SE; PSS; PP15; D253



Engraving. Portrait of Robert Stephenson. Signed by Robert Stephenson. Painted by John Lucas. Engraved by R. Jackson. **1977-7364**
NRM; SE; PSS; PP13; D217



Painting, oil, portrait of Robert Stephenson (1803-1859), Mechanical and Civil Engineer, 1850s, unknown artist.

1977-5837

NRM; AS; R64B



Lithograph. Portrait of Robert Stephenson, Vice President of the Institution of Civil Engineers. From a daguerrotype by Kilburn, Photographer to the Queen.

1977-7331

NRM; SE; PSS; PP13; D217



Portrait of Robert Stephenson

1977-7330

NRM; SE; PSS; PP13; D219

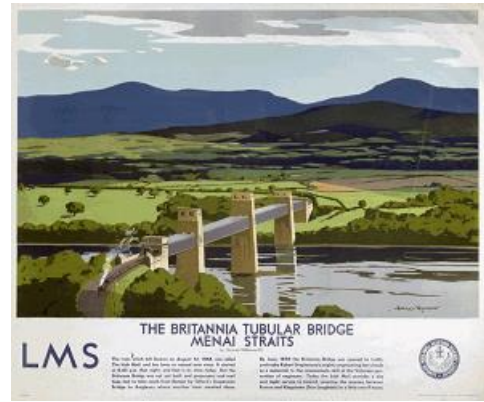




Engraving. Conference of Engineers at the Menai Straits preparatory to floating one of the tubes of the Britannia Bridge. Signed by Robert Stephenson. Painted by John Lucas. Engraved by James Scott. Published by Henry Graves & Company, Printsellers to the Queens, 6 Pall Mall, London. 25 January 1858.

1975-8721

NRM; SE; PSS; PPI5; D253

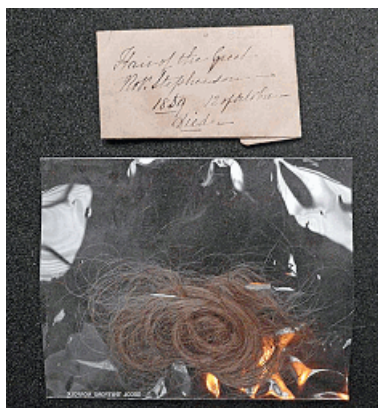


London Midland & Scottish Railway poster. The Britannia Tubular Bridge - Menai Straits by Norman Wilkinson. Landscape with bridge in foreground. Robert Stephenson's mighty engineering feat stands as a memorial to the consummate skill of the Victorian generation of engineers. Format: quad royal. Dimensions: 40 x 50 inches, 1016 x 1270 mm.

1978-9174

NRM; SE; PSS; PP01; D06

Objects



Lock of hair, reputed to be of Robert Stephenson.
1982-7021
Station Hall
NRM; SH; TT



Bronze commemorative medallion, Chester & Holyhead Railway (L&NWR) Commemorating the opening of the Britannia Bridge, head of Robert Stephenson on reverse. Dimensions: 58mm dia.
1984-7105

Calling card case
Inlaid wood.
Containing two
cards belonging
to Robert
Stephenson
1982-7022
Station Hall
NRM; SH; TT



Epergne, silver,
designed and
manufactured by
Mr B Smith of
Duke Steet,
Lincoln's Inn
Fields, London,
presented to
Robert
Stephenson, 16th
November 1839.
2001-7063
Warehouse
NRM; WH; B7



Statuette, Robert
Stephenson, Parian
ware, marked
'Durham 1859',
repaired.
1986-8168
Warehouse
NRM; WH; BI/CI;
KD10



Longcase clock by
Isaac Jackson,
Wylam, ordered by
Robert Stephenson
in 1857 and installed
in the General
Manager's Office at
R. Stephenson &
Co's Locomotive
Works, Newcastle,
14.12.1858
1994-8956
NRM; PAB; SO



Table, pine top with mahogany trim, turned stained pine
legs, formerly the property of George Robert Stephenson
(1819-1905) and reputedly used by George and Robert
Stephenson.
2001-7063
Warehouse
NRM; WH; B7

Engineering Drawings

- Collection of 166 original working drawings on cartridge paper, some with water colour wash, (1825-1869) showing the evolution of the locomotive by Robert Stephenson & Co. Ltd. during the working lifetime of Robert Stephenson. These drawings were preserved by the firm as the core of their historic collection, and transferred to the Science Museum in 1924. They were treated as separate from the firm's historic business records. Locomotives depicted include Locomotion, Rocket, Invicta, Planet etc. Companies include the Liverpool & Manchester, Stockton & Darlington, Mohawk & Hudson, Nurmeburg Furth, South Carolina, Marseilles-Avignon, London & North Western and Great Western Railways.

Itemised list of the drawings available.

1924-159

- Elevation of the Rocket, constructed by Messrs Robt Stephenson & Co Robert Stephenson & Company. Coloured drawing, window mounted. Elevations of the (Locomotive) Rocket constructed by Robert Stephenson & Co, Newcastle upon Tyne, July 1829. Side and front elevations. This drawing shows Rocket in its rebuilt state, with lowered cylinders and smokebox added, and was probably completed in 1836 or later. 1 drawing.

1996-7066

Archive Material

- No.1 Minute Book [of R. Stephenson & Co. 1 vol. Contains 'Memorandum for an Agreement of Copartnership between Robert Stephenson of Killingworth near Newcastle, George Stephenson of the same place, Edward Pease of Darlington, and Michael Longridge of Bedlington, for carrying on the business of Engine Builders, Mill Wrights &c at Newcastle upon Tyne ... [as] Robert Stephenson & Co.', 1823 Jun 23; minutes of meetings from 1823 Jun 24 to 1848 Sept 9; memoranda and copy letters, with one or two other items (up to 1853 May) tipped in. The original capital was £4,000 divided into ten shares of £400 each. The Stephensons and Longridge held two shares each, Pease held four]

1947-134

- Diary of Robert Stephenson, 1834
The Law and Commercial Daily Remembrancer for 1834 [i.e. diary, of Robert Stephenson. Prefaced by 86 printed pages, including table of contents and index. Daily ms. entries commence on Jan 27; blank Apr 2-15. In 1834 Robert Stephenson was mainly occupied with his work as an engineer of the London and Birmingham Railway but, as this diary shows, he had many other interests which made him a frequent

traveller, by coach, to various parts of England. Reference to visits to Leicester in connection with the Leicester and Swannington Railway, to his firm Robert Stephenson and Company at Newcastle-upon-Tyne, and to give evidence in Parliament on the Western Railway (i.e. G.W.R.) and the Brighton Railway are included]

1947-135

- Records of Robert Stephenson & Co., 1823 to circa 1960. Business records, mainly concerning locomotive production - orders, descriptions and engineering drawings. There are also some financial records, letter, papers and photographic prints. Catalogue available.

1970-473

- Letters from Robert Stephenson to Samuel Smiles 1854-1858
22 letters from Robert Stephenson to Samuel Smiles, 1854-1858, along with a 14 page essay on the construction of the Rocket. The letters give Smiles information for his biography 'The Life of George Stephenson' and details about Robert's own career. 21 of the letters and the essay are in Stephenson's own hand, 1 is only signed by him.

2006-7495